

Product data sheet

Power connectors

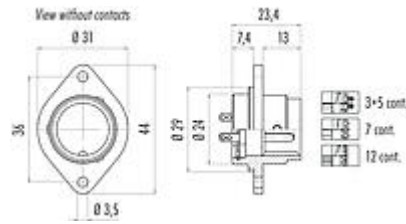


Product description	Bayonet Male panel mount connector, Contacts: 12, unshielded, solder, IP40
Area	Bayonet series 690
Part no.	09 0469 00 12

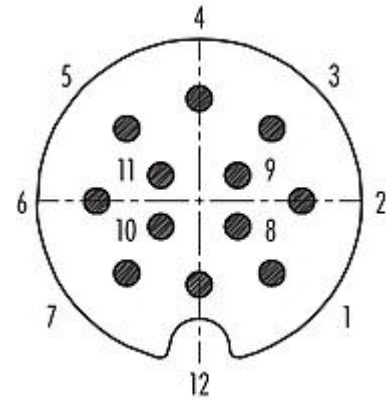
Illustration



Scale drawing



Contact arrangement (Plug-in side)



You can find the component part drawing and assembly instructions on the next page.

Technical data

General features

Part no.	09 0469 00 12
Connector design	Male panel mount connector
Version	male straight
Connector locking system	Bayonet
Termination	solder
Degree of protection	IP40
Cross-sectional area	0.75 mm ² / AWG 18
Temperature range from/to	-40 °C / 85 °C
Mechanical operation	> 50 Mating cycles
Weight (g)	14.94
Customs tariff number	85369010

Electrical parameters

Rated voltage	125 V
Rated impulse voltage	1500 V
Rated current (40 °C)	5.0 A
Insulation resistance	≥ 10 ¹⁰ Ω
Pollution degree	1
Overvoltage category	II
Insulating material group	III
EMC compliance	unshielded

Product data sheet

Power connectors



Product description	Bayonet Male panel mount connector, Contacts: 12, unshielded, solder, IP40
Area	Bayonet series 690
Part no.	09 0469 00 12

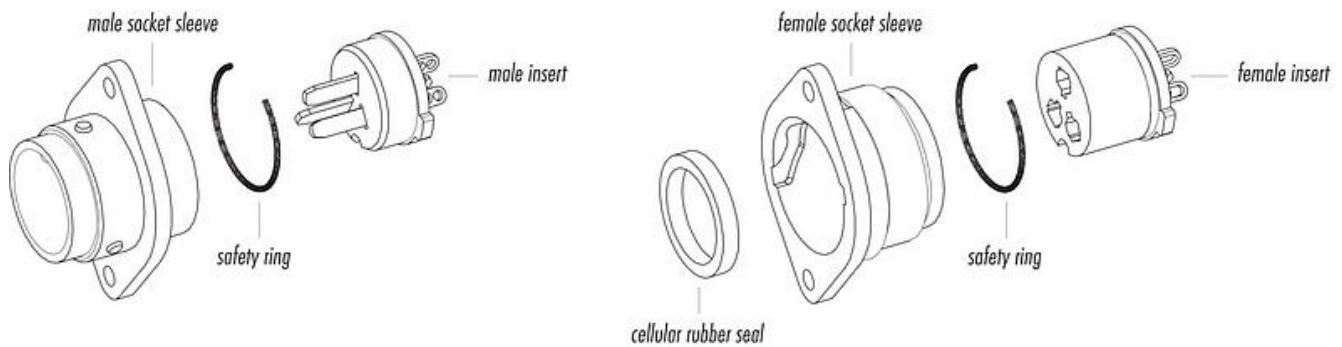
Material

Housing material	PBT
Contact body material	PBT (UL94 V-0)
Contact material	CuZn (brass)
Contact plating	CuSnZn (Optalloy)
REACH SVHC	CAS 7439-92-1 (Lead)
SCIP number	fab434a9-f264-4c40-b175-9d3f3e94feb8

Classifications

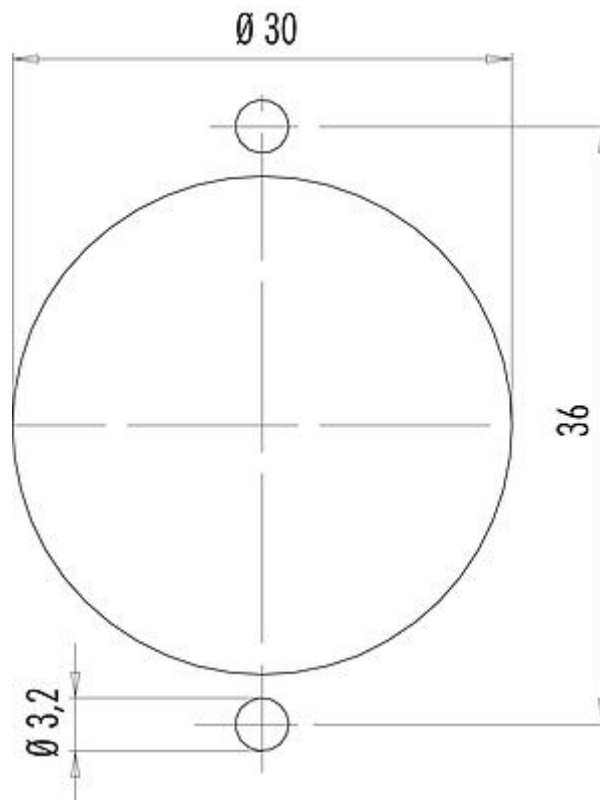
eCl@ss 11.1	27-44-01-09
ETIM 7.0	EC003569

Component part drawing



Product description	Bayonet Male panel mount connector, Contacts: 12, unshielded, solder, IP40
Area	Bayonet series 690
Part no.	09 0469 00 12

Assembly instructions / Panel cut-out



Product description	Bayonet Male panel mount connector, Contacts: 12, unshielded, solder, IP40
Area	Bayonet series 690
Part no.	09 0469 00 12

Security notices

The connector must not be plugged or unplugged under load. Non-observance and improper use can result in personal injury.

The connectors have been developed for applications in plant engineering, control and electrical equipment construction. The user is responsible for checking whether the connectors can also be used in other areas of application.