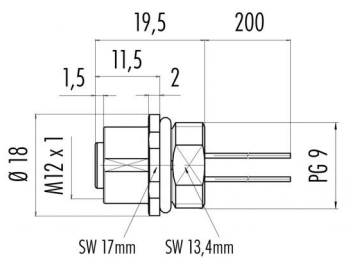


Product description **M12-A female panel mount connector, Contacts: 4, unshielded, single wires, IP68, PG9**

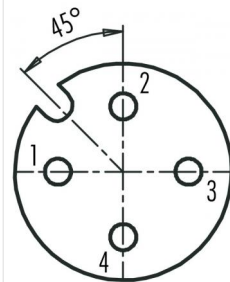
Area **M12-A series 713**  
 Order number **76 0132 0011 00004-0200**

### Scale drawing



Version with zinc diecasted housing

### Contact arrangement (Plug-in side)



- 1 *brown*
- 2 *white*
- 3 *blue*
- 4 *black*

You can find the assembly instructions on the next page.

## Technical data

### General features

|                           |  |
|---------------------------|--|
| Order number              | 76 0132 0011<br>00004-0200   |
| Notice                    | Please note that, due to the change from the old to the new order number, there may be deviations in the technical specifications. For questions about product details, please use the 'Contact Customer Service' form on the right. |
| Connector design          | female panel mount connector   |
| Wire length               | 0,2 m  |
| Version                   | connector female straight screw  |
| Connector locking system  | single wires   |
| Termination               | IP68   |
| Degree of protection      | 0.25 mm <sup>2</sup> / AWG 24  |
| Cross-sectional area      | -40 °C / 85 °C   |
| Temperature range from/to | > 100 Mating cycles  |
| Mechanical operation      | 12.448   |
| Weight (g)                | 85369163   |
| Customs tariff number     |  |

### Material

|                       |                             |
|-----------------------|-----------------------------|
| Housing material      | Zinc die-cast nickel-plated |
| Contact body material | PA black                    |
| Contact material      | CuSn (bronze)               |
| Contact plating       | Au (gold)                   |
| REACH SVHC            | CAS 7439-92-1 (Lead)        |

### Electrical parameters

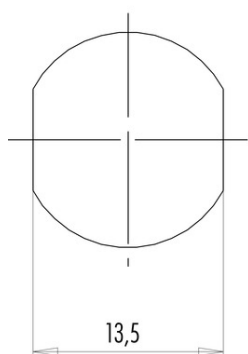
|                           |                     |
|---------------------------|---------------------|
| Rated voltage             | 250 V               |
| Rated impulse voltage     | 2500 V              |
| Rated current (40 °C)     | 4 A                 |
| Insulation resistance     | > 10 <sup>8</sup> Ω |
| Pollution degree          | 3                   |
| Overvoltage category      | II                  |
| Insulating material group | III                 |
| EMC compliance            | unshielded          |

Product description **M12-A female panel mount connector, Contacts: 4, unshielded, single wires, IP68, PG9**

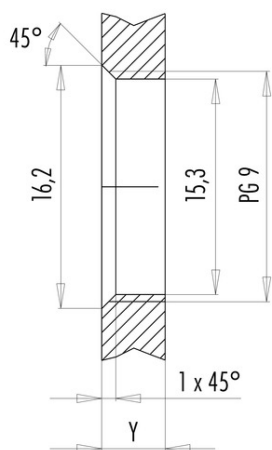
Area **M12-A series 713**  
 Order number **76 0132 0011 00004-0200**

### Assembly instructions / Panel cut-out

With flats as anti-rotation device



With bore hole



Installation direction: o-ring sits on chamfer.

#### Tightening moment

Metall housing/Plastic housing 1,25 Nm

| Thickness of wall Y (mm)           |                                    |          |
|------------------------------------|------------------------------------|----------|
| Version                            | min (mm)                           | max (mm) |
| Fastened from rear                 | 2                                  | 3,5      |
| Front fastened                     | 2                                  | 4,5      |
| positioning possible <sup>1)</sup> | 2                                  | 3,5      |
| Screw clamp                        | 2                                  | 3,5      |
| Thread M12 x 1                     | 2                                  | 3,0      |
| Thread M14 x 1 <sup>2)</sup>       | <sup>3)</sup> 1,5/ <sup>4)</sup> 2 | 6,5      |

#### Notes

- <sup>1)</sup> Do not attach a chamfer
- <sup>2)</sup> Wall thickness:  
use locknut 01-5385 up to 1,5 mm,  
>1,5 mm cut thread
- <sup>3)</sup> Nut
- <sup>4)</sup> Thread in wall of housing

|                     |   |
|---------------------|---|
| Product description | <b>M12-A female panel mount connector, Contacts: 4, unshielded, single wires, IP68, PG9</b> |
| Area                | <b>M12-A series 713</b>   |
| Order number        | <b>76 0132 0011 00004-0200</b>  |

## Security notices

The connector must not be plugged or unplugged under load. Non-observance and improper use can result in personal injury.

The connectors have been developed for applications in plant engineering, control and electrical equipment construction. The user is responsible for checking whether the connectors can also be used in other areas of application.

Plug connectors with enclosure protection IP 67 and IP 68 are not suitable for use under water. When used outdoors, the plug connectors must be protected separately against corrosion. For further information on the IP protection classes, please refer to the "Technical Information" download centre.